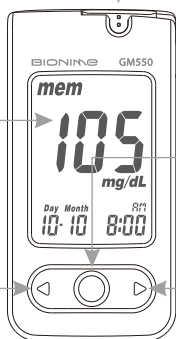


Rightest™ GM550 GETTING STARTED GUIDE (For self-testing)

Test Strip Port
Insert test strip
here until you hear
a click.

Display Window
Show your test
result, messages
and relative
information.

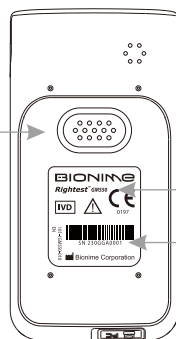
Left Button (◀)
For operating the
meter, please
check details in
following sections.



Main Button (●)
For operating the
meter, please
check details in
following sections.

Right Button (▶)
For operating the
meter, please
check details in
following sections.

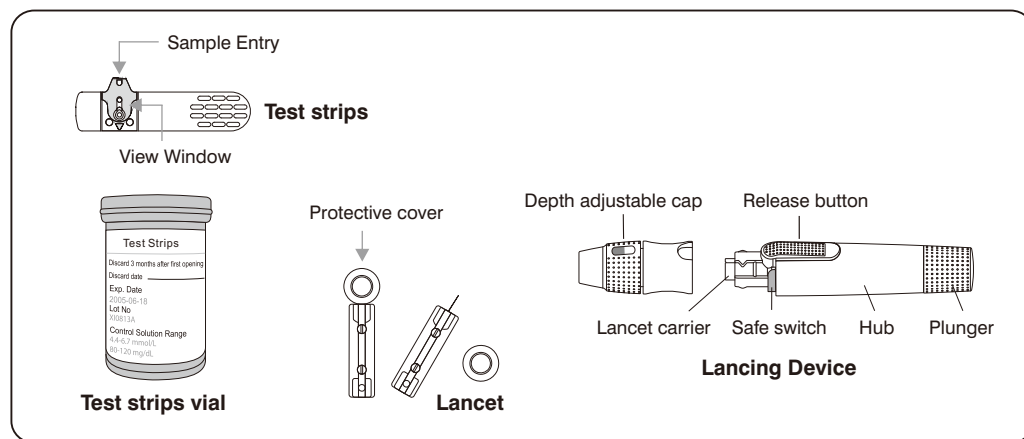
Battery Cover
Slide cover to
change batteries.



Product name
Meter Serial
Number

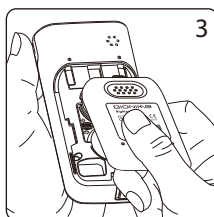
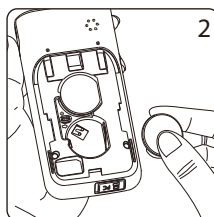
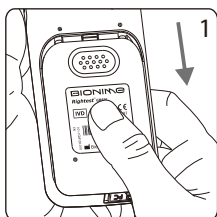
Front View of Meter

Back View of Meter



1 Batteries Installation

- 1) Turn the meter over. Press and push battery cover to open.
- 2) Install the battery. Be sure to put battery in correct direction.
- 3) Slide the battery cover back until it snaps into place.

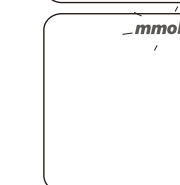
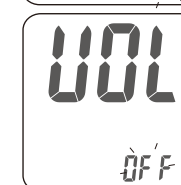


2 Setting Up Your Meter - Setting the Date, Time and Unit

- 1) Press and release main button " ● " to turn on the Meter.
- 2) Press and hold main button " ● " for 7 seconds until you go into the setting mode. Before you go into setting mode, the meter will turn off first. Please keep pressing it until you go into the setting mode. The year will flash.
- 3) Press left button " ◀ " or right button " ▶ " to change the year.
- 4) Press main button " ● " to confirm the year and move to month setting.



- 5) Repeat steps 3 and 4 to change the date, time format, hour, minute, volume, and measurement unit. After pressing the main button to confirm the measurement unit setting, your set-up has been finished.

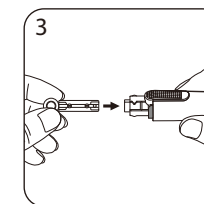
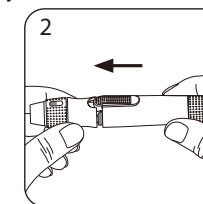
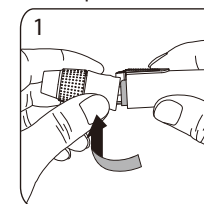


NOTE

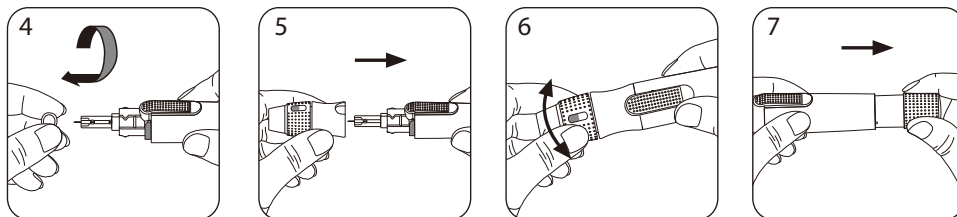
- Suggest not to use this meter close to source of strong electromagnetic radiation, to avoid interference with proper operation.
- Suggest to keep meter free of dust, water or any liquid.

3 Preparing the Lancing Device

- 1) Hold the depth adjustable cap in one hand and hold the hub in the other hand. Bend the cap towards the down side. When a gap appears between the cap and hub, pull them off in opposite directions.
- 2) Pull off the depth adjustable cap.
- 3) Insert a new disposable lancet firmly into lancet carrier.

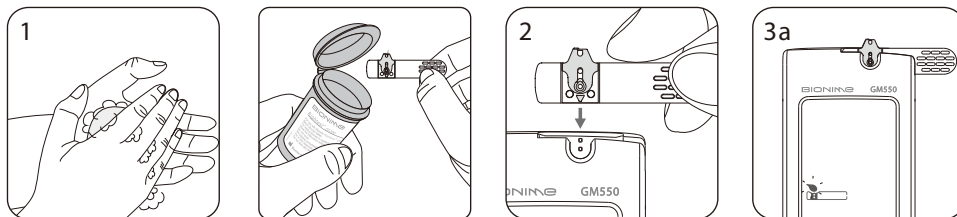


- 4) Twist off and set aside the protective cover of the disposable lancet.
- 5) Replace the depth adjustable cap.
- 6) Choose a depth of penetration by rotating the top portion of the depth adjustable cap until the setting depth matches the window. Settings are based on skin type
 "■■■" for soft or thin skin;
 "■■■■" for average skin;
 "■■■■■" for thick or calloused skin.
- 7) Hold the hub in one hand and pull on the plunger in the other hand. The device will be cocked. Release the plunger, it will automatically move back to its original position near the hub.

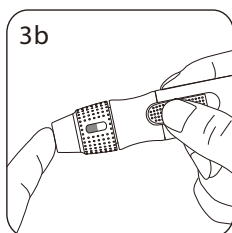


4 Performing a Test

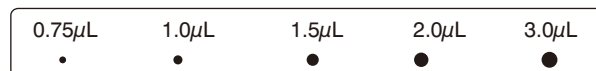
- 1) Wash and dry your hands. Take one strip from the vial. Close the vial cap immediately.
- 2) Insert the strip into the strip port on meter with the indication symbol facing up. Push the strip in until it clicks and stops. The meter will automatically detect code number.
- 3) When you see the flashing blood drop, hold the lancing device to side of your fingertip and press the release button.



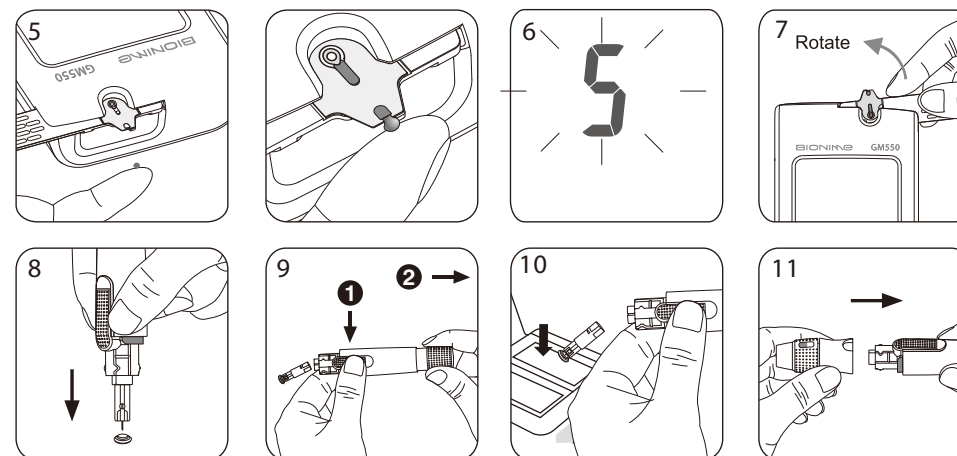
- 4) The Meter only needs a tiny blood sample. Please take a minimum of 0.75μL to do the test on blood glucose monitoring system. Blood sample size above 3.0μL might contaminate the meter. Not enough blood (<0.75μL) might cause inaccurate result.



Sample Size Example



- 5) Touch and hold the drop to the edge of sample entry until you hear a " beep " and the view window is totally filled with blood. If the view window is not totally filled with blood or the test does not start, discard the test strip and repeat the test with a new test strip.
- 6) You will see the countdown mode on the screen. After 5 seconds, the test result appears. For more information about your test results, please see your User Manual.



- 7) Remove the test strip from meter. Please follow the local regulation and discard the used strip properly.
- 8) Pull off the depth adjustable cap. Without touching the used disposable lancet, stick the lancet tip into the protective cover.
- 9) Hold the release button in one hand and pull on the plunger in the other hand, this will safely eject the used disposable lancet.
- 10) Discard the used disposable lancet into an appropriate puncture-proof or biohazard container.
- 11) Replace the depth adjustable cap after finishing the test.

For more information on how to use your meter and understand your test results, please see the User Manual.

BIONIME

BIONIME CORPORATION
 No. 100, Sec. 2, Daqing St., South Dist.,
 Taichung City 40242, Taiwan
 Tel: 886-4-23692388 Fax: 886-4-22617586
 Email: info@bionime.com
 Website: www.bionime.com

EC REP

Bionime GmbH
 Tramstrasse 16
 9442 Berneck
 Switzerland
 E-mail: info@bionime.ch

CE
 0197

101-3GM550-242
 EN